

The Benedict



3 BEDROOMS • 2.5 BATHROOMS • 2,549 SQUARE FEET*



COTTAGE

*varies by elevation



TRADITIONAL

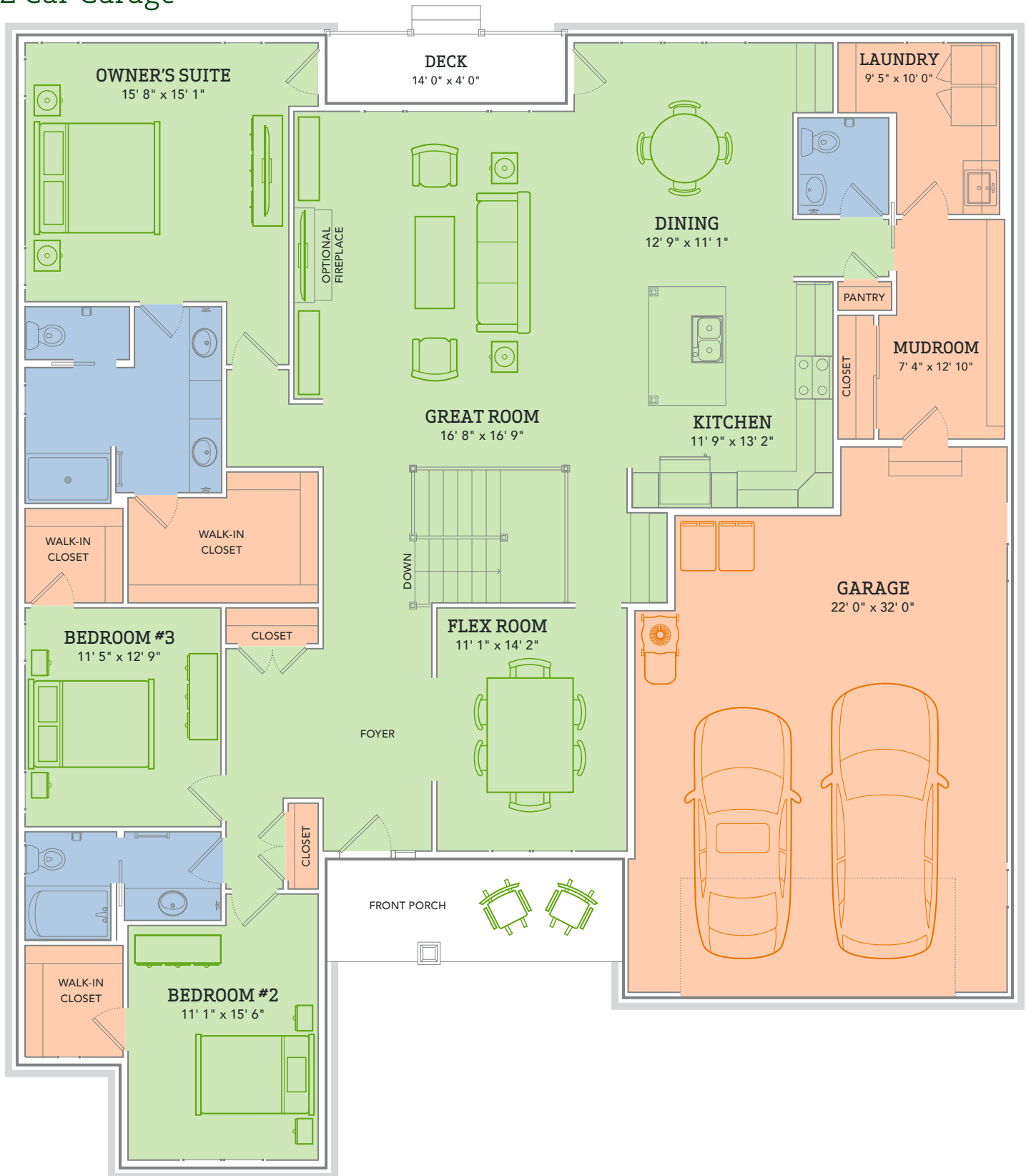


WE MAKE BUILDING EASY®. When you build a Veridian home, you get much more than a home designed around you and your dreams. You get the peace of mind that comes with nationally-recognized, award-winning, quality craftsmanship and energy efficiency. You get a home that's constructed using innovative building materials as well as the newest technology and building practices. The result is a high-performing, green and energy efficient home that's a healthier home for you and your pocketbook. And when you build with Veridian Homes, you build with a team of specifically trained experts who make homebuilding easy.

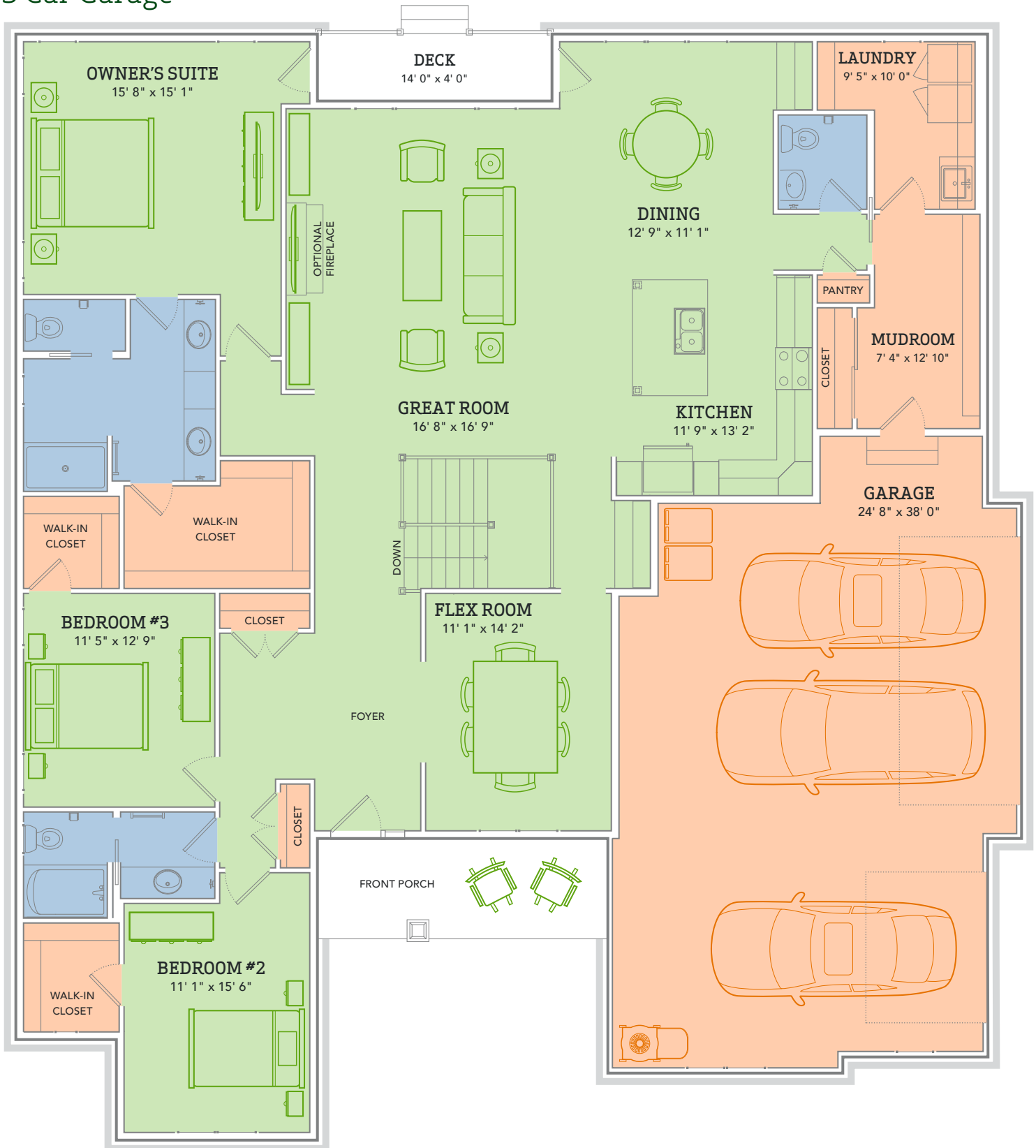
Dream. Build. Live.

DESIGN STUDIO: 6801 South Towne Drive | PHONE: 1.800.726.7397 | WEB: VeridianHomes.com

2 Car Garage



3 Car Garage



The Benedict

DESIGNED TO IMPRESS, INTRODUCING THE BENEDICT. This luxurious ranch home is sure to dazzle your dinner guests from the moment they walk in. With its elegant foyer, complete with tray ceiling, and its awe-inspiring great room, this generous floorplan is ideal for cocktail parties or simply winding down with a glass of wine. What are you waiting for? Come on in and enjoy the life of leisure that the Benedict can offer you.

Features

- Nine foot ceilings throughout first floor, with ten foot ceilings in great room
- Kitchen open to great room and dining area
- Convenient kitchen island with breakfast bar
- Custom Auburn Ridge® cabinetry
- Owner's suite features large walk-in closet and private bath
- Separate mudroom and laundry room
- Full basement
- Flex room off foyer, for formal dining, office, etc.
- Entrance to deck from owner's suite and dining areas
- Smart Home+ technology
- Energy expert certified
- Award-winning, high-performance home

Options

- Fireplace in great room
- Custom built-ins
- Tray ceiling in owner's suite and flex room
- Personalized closet systems
- Additional green materials/products
- Personalize your home with thousands of options found within our Design Studio



*features from a similar model

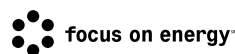


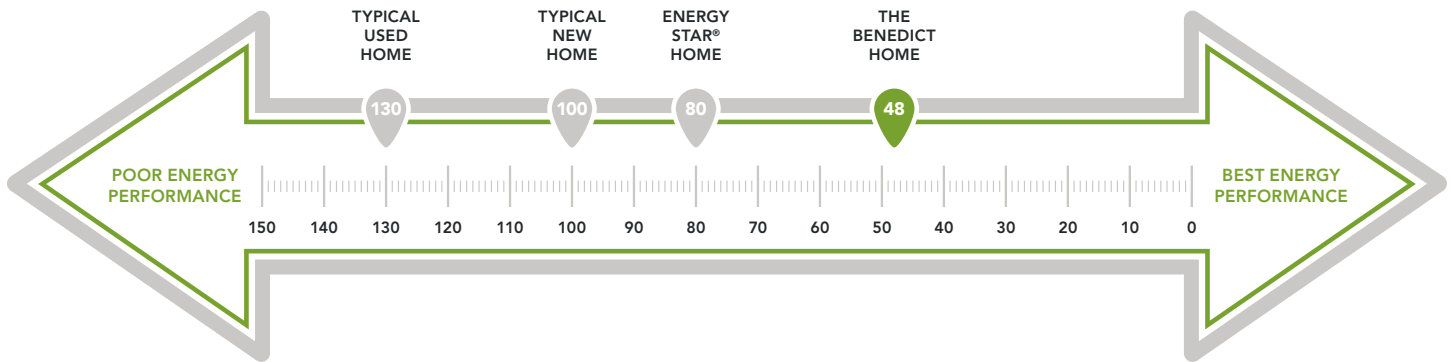
*features from a similar model



*features from a similar model

CERTIFIED HIGH-PERFORMING HOMES
BUILDING ENERGY EFFICIENT, GREEN HOMES SINCE 2001

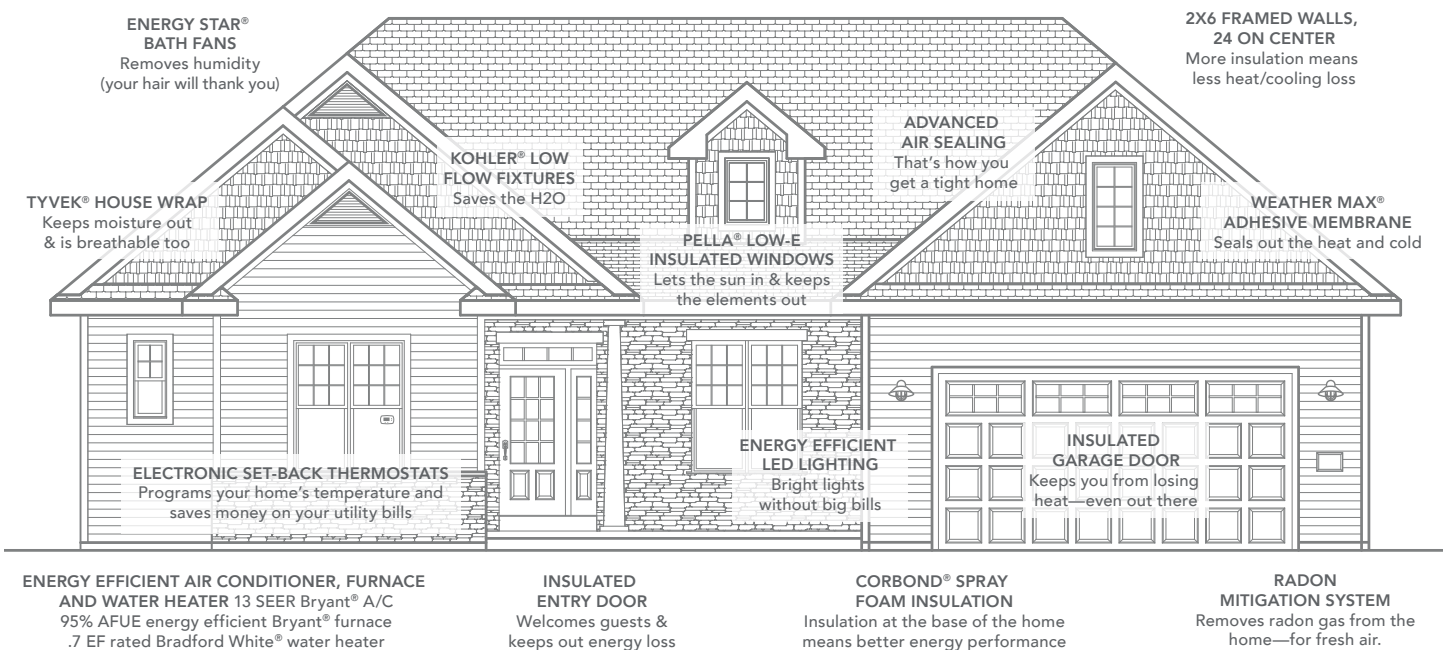




\$212
IN SAVINGS

ESTIMATED AVERAGE MONTHLY ENERGY BILL SAVINGS WITH THE BENEDICT*

ENERGY EXPERT CERTIFIED
Trust the experts to test your home



A LOOK INSIDE THE BENEDICT'S ENERGY EFFICIENCY. Each point decrease in the HERS Index means a 1% reduction in energy consumption. Based on this, the Benedict is 74% more energy efficient than a typical used home. The HERS Index is a scoring system created by the Residential Energy Services Network (RESNET), and provides comparable energy efficiencies in various homes. Only a RESNET certified independent energy rater can determine a home's score. This energy scale is based on the U.S. Department of Energy's EnergySmart Home Scales. Actual energy savings may vary depending on a number of factors including the number of people living in the household, consumption habits, age/condition of electronics and appliances used, and lifestyle; and are not guaranteed.

*Estimated average monthly energy bill savings with the average Veridian home. The costs were calculated using REM/Rate™ 12.97 and the HERS Score for the reference homes listed in the arrow chart and were published by RESNET, as compared to the typical used home. The typical used and new home scores were determined by the U.S. Department of Energy.