

# THE ARCHER



3 BEDROOMS • 2 BATHROOMS • 1,718 SQUARE FEET\*



CRAFTSMAN I



CRAFTSMAN II



CRAFTSMAN III

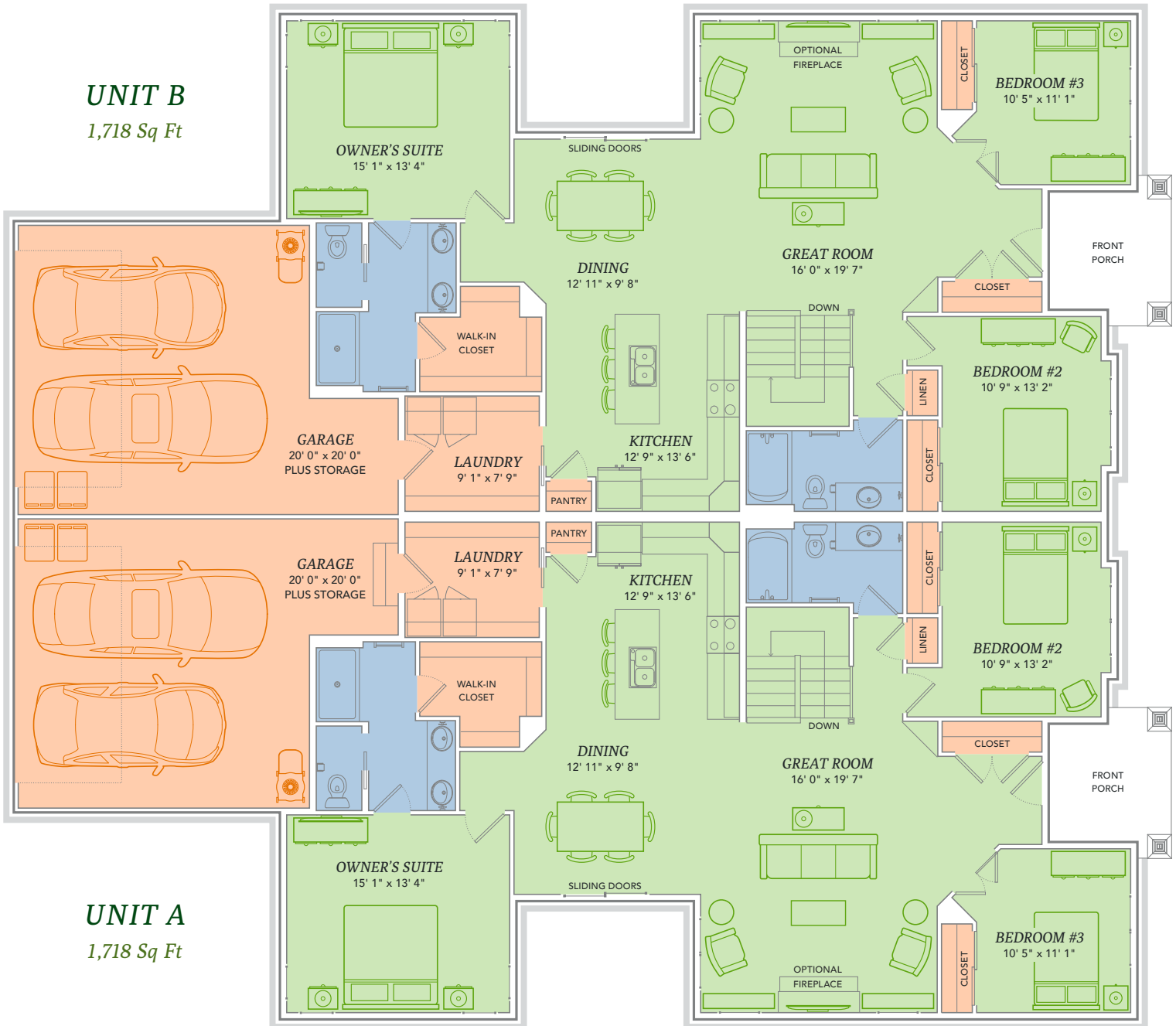
\*Varies by elevation

**WE MAKE BUILDING EASY.®** When you build a Veridian home, you get much more than a home designed around you and your dreams. You get the peace of mind that comes with nationally-recognized, award-winning, quality craftsmanship and energy efficiency. You get a home that's constructed using innovative building materials as well as the newest technology and building practices. The result is a high-performing, green and energy efficient home that's a healthier home for you and your pocketbook. And when you build with Veridian Homes, you build with a team of specifically trained experts who make homebuilding easy.

*Dream. Build. Live.*

DESIGN STUDIO: 6801 South Towne Drive | PHONE: 1.800.726.7397 | WEB: [VeridianHomes.com](http://VeridianHomes.com)

1,718 Sq Ft



1,718 Sq Ft



\*Features from a similar model



\*Features from a similar model



\*Features from a similar model

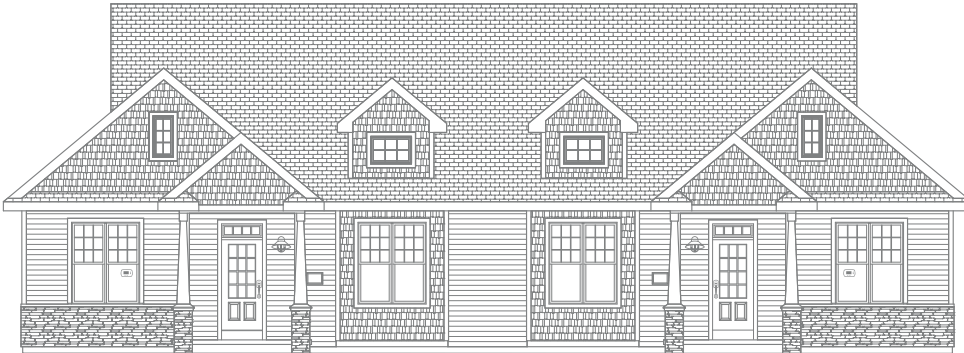
**WHERE TO BEGIN?** With the ease of a single floor layout, The Archer allows you to be the master of your domain. We understand that you're busy, which is why it has never been easier to take care of your to-do list as quickly and conveniently as possible. Multitaskers rejoice with the fact that you can start a load of laundry, preheat your oven, and set the table for dinner all in one trip. And once all your boxes are checked, kick your feet up in front of the fireplace and bask in the comfort of The Archer.

## Features

- First floor laundry/mudroom
- Custom Auburn Ridge® cabinetry
- Spacious two car garage with area for storage
- Smart Home+ technology
- Wide open living room and dining space
- Energy expert certified
- Award-winning, high-performance home
- Full basement
- Sliding door access to yard
- Owners suite with private bathroom and walk-in closet







- Energy Expert Certified
- Insulated Entry Door
- Pella® Low-E Insulated Windows
- Insulated Garage Door
- Electronic Set-Back Thermostats
- Energy Efficient LED Lighting
- Kohler® Low Flow Fixtures
- Energy Star® Bath Fans
- Energy Efficient Air Conditioner, Furnace and Water Heater
- Radon Mitigation System
- 2x6 Framed Walls, 24 on Center
- Tyvek® House Wrap
- Advanced Air Sealing
- Spray Foam Insulation
- Weather Max® Adhesive Membrane



**\$296 IN SAVINGS EVERY MONTH!\***

**A LOOK INSIDE THE ARCHER'S ENERGY EFFICIENCY.** Lower index = higher efficiency. What does that mean to you? A HERS Index is the industry standard by which a home's energy efficiency is measured. It is also the nationally-recognized system for inspecting and calculating a home's energy performance. A Veridian home receives a rating 56 HERS or better, averaging 51 HERS, compared a typical old used home, which rates at 130 HERS – that's greater than a 70% increase in total energy performance. This means that your dream home will not only look like a dream, but it will run like one too.

\*Estimated average monthly energy bill savings with the Archer. The costs were calculated using REM/Rate™ 12.97 and the HERS Score for the reference homes listed in the arrow chart and were published by RESNET, as compared to the typical used home. The typical used and new home scores were determined by the U.S. Department of Energy.

